



## Night Dreams

**Date of Birth:** 05/10/2017  
**Registration 1:** Pending  
**Breeder:** James & Lynette Haltom  
**Owner:** Blattell Cattle Co



*Courtesy of Blattell Cattle Co*

Night Dreams was color coat tested by UC Davis as Ed/E+ (dominant black carrier of wild type). Her dam EJ Phenomena Night is homozygous black and brings in BL Night Chex and Phenomenon genetics. Her sire Bubba Tuff Chex brings in Cowboy Tuff Chex, BL Rio Catchit and JP Rio Grande genetics. She is a beautiful heifer with a wonderful pedigree you can build on. Exposed to Stop Box 2020 from 7/3/2022.

**TTT:** 53.7500 on 09/03/2019



Night Dreams

BUBBA TUFF CHEX



EJ PHENOMENA NIGHT



COWBOY TUFF CHEX



BL RIO GIZZY 933



BL NIGHT CHEX



WH Phenomena One



COWBOY CHEX



BL RIO CATCHIT



JP RIO GRANDE



HUBBELLS BLACK BEAUTY



CIRCLE K DONOVAN



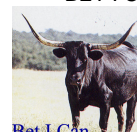
MISS QUIXOTE ESPECIAL



PHENOMENON



BET I CAN



Bet I Can



<http://www.hiredhandsoftware.com>